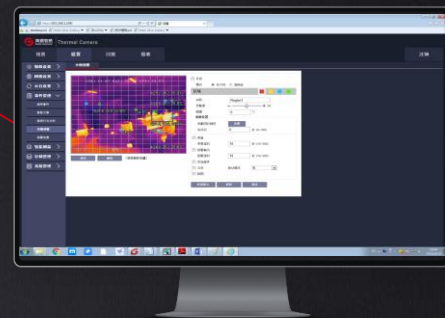


# DS60xxFT-L Thermal & Optical Bi-spectrum PTZ

Precise Positioning for Multiple Objects, Safe and Comprehensive



## Introduction

DS60xxFT-L series is designed for medium-range indoor and outdoor monitoring and temperature measurement. With self-developed uncooled vox microbolometer by Guide, the DS60xxFT-L series features 24-hour monitoring, sharp images and highly accurate temperature measurement in harsh weather conditions. By adopting the worm gear design, the durable DS60xxFT-L series provides precise positioning.



## Features and Benefits

- 640×512 IR Resolution
- 25 mm/50 mm lens
- Web access for configuration
- Up to 300 presets and 12 spots/lines/areas for every preset
- Highly accurate temperature measurement, temperature analysis and alarm in real time and tracking of temperature history
- Fire detection & alarm and detection of intrusions and tripwire

## Applications

For indoor and outdoor scenes, including:

- Temperature measurement in transformer substations
- Prevention of straw burning
- Fire prevention for forests, scenic places and cultural museums
- Port and petrochemical facilities monitoring

# Specifications

| Model                          | DS6013FT-L   | DS6025FT-L     |
|--------------------------------|--|----------------|
| <b>Thermographic</b>           |  |                |
| Detector type                  | VOx  |                |
| Detector resolution            | 640×512  |                |
| Pixel size                     | 17μm   |                |
| Wavelength range               | 8μm to 14μm  |                |
| NETD                           | ≤40mK@30°C   |                |
| Thermographic camera lenses    | 13mm (45.4°×37°)   | 25mm (25°×20°) |
| Detail enhancement             | supported  |                |
| Noise reduction                | 2D/3D noise reduction  |                |
| Image flip                     | supported  |                |
| Color palette                  | 9 (White Hot, Black Hot, Fusion, Rainbow, etc.)  |                |
| <b>Temperature measurement</b> |  |                |
| Measurement range              | Low: -20 °C to 150 °C; High: -20°C to 550°C  |                |
| Measurement accuracy           | ±2°C or ±2% (whichever is greater)   |                |
| Target setting                 | Up to 300 presets; 12 spots/lines/areas (circle, square or irregular polygon) for each preset; Measurement for up to 12 simultaneous spot + line +area for each preset |                |
| Coldest/hottest spot tracking  | supported  |                |
| Full-screen point measurement  | supported  |                |
| Temperature query and export   | supported  |                |
| <b>Visible light</b>           |  |                |
| Sensor type                    | 1/1.9" CMOS  |                |
| Maximum resolution             | 1920x1080  |                |
| Minimum illuminance            | Color: 0.001Lux @ (F1.5, AGC ON); black and white: 0.0001Lux @ (F1.5, AGC ON)  |                |
| gain control                   | Auto/manual  |                |
| Noise reduction                | 2D/3D noise reduction  |                |
| Backlight compensation         | supported  |                |
| Wide dynamic range             | supported  |                |
| Strong light photoinhibition   | supported  |                |
| Image flip1                    | supported  |                |
| Exposure compensation          | supported  |                |
| Lens                           | 6mm-210mm, horizontal: 61° (near focus) - 2.0° (far focus); 1m-1.5m (near focus to far focus)  |                |
| Fill light                     | Infrared fill light  |                |
| <b>Imaging</b>                 |  |                |
| Video compression              | H.265, H.264 and MJPEG   |                |
| Image coding format            | JPEG   |                |
| Code stream                    | Visible light: Mainstream (1920×1080, 1280×720) and Substream (1280×720, D1); Thermal: 1280 × 1024@25Hz, 640 × 512@25Hz  |                |
| <b>Protocol and storage</b>    |  |                |
| Network protocol               | IPv4, HTTP, FTP, SMTP, RTSP, RTP, TCP, UDP, DHCP, ONVIF and GB/T28181  |                |
| Sdk/api                        | Open API/SDK for software integration  |                |
| Local storage                  | 32G TF card  |                |
| <b>System function</b>         |  |                |
| Languages                      | Chinese/English  |                |
| Browser                        | supported  |                |
| User management                | Max. 20 users with two levels of user accounts (Admin and User)  |                |
| Fault detecti                  | Network disconnection, IP conflict, encoder status, memory card status and storage space   |                |
| <b>Hardware interface</b>      |  |                |
| Power interface                | DC 24V   |                |
| Network interface              | One 100M/1,000M Ethernet port  |                |
| Alarm interface                | 1 input and 1 output   |                |
| Other interface                | 1-channel RS485, audio 1 in 1 out  |                |
| <b>Environmental</b>           |  |                |
| Operating temperature          | -40°C to +65°C   |                |
| Operating humidity             | ≤ 90%, non-condensing  |                |
| Encapsulation                  | IP66   |                |
| <b>Physical</b>                |  |                |
| Product size (l×w×h)           | ≤230mm × 347mm × 232mm   |                |
| Net weight                     | ≤6.23kg  |                |
| Power consumption              | < 40W  |                |
| Installati                     | Customized bracket   |                |

