



– 20 Years –
Focus on thermal fever screening



T120H

Fever Screening Thermal Camera

M&T INNOVATIONS (M) SDN BHD
32-2A, JALAN PJU 1/3A | SUNWAYMAS COMMERCIAL CENTRE
SALES@MT-ENGG.COM | WWW.MT-ENGG.COM
+6018 - 280 1682 | +603 - 7803 1147

T120H Fever Screening Thermal Camera



GUIDE T120H Fever Screening Thermal Camera is a fast temperature detection tool, which can be used to detect human temperature from a safety distance with accuracy of $\pm 0.5^{\circ}\text{C}$. It is an economical and practical thermal camera that could meet the needs of initial temperature screening well. With two intelligent temperature screening modes, GUIDE T120H is not only suitable for flexible temperature screening, but also can be deployed at the entrances and exits of the public area, which makes it an ideal device to improve the efficiency of epidemic prevention and protect public health.



Features

- Adopt the high sensitive WLP IR detector with independent intellectual property rights
- Boot up in 1 second, fast temperature detection, automatic fever identification with image warning
- 1-meter safe detection distance, low risk of infection, no disturb to detected person
- Support to save up to 100,000 images, can check temperature data
- TYPE-C interface, 2.5H fast charge, battery time up to 8H
- Compact and portable, suitable for mobile detection, and also can be fixed by optional tripod

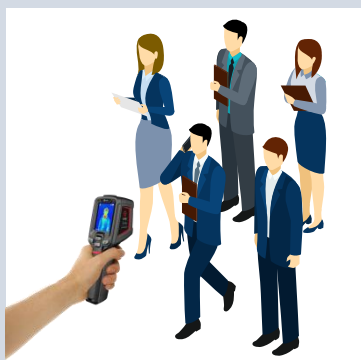
Application

Suitable for rapid temperature screening in factories, schools, shopping malls, office buildings and other public places to control and reduce the spread of virus with fever symptom, such as Novel Coronavirus, Ebola, SARS and Zika...

The process of thermal camera applied to temperature screening

1

Fast temperature screening by Thermal camera



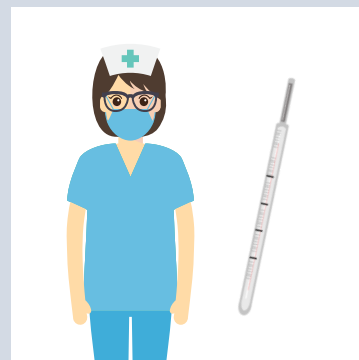
2

automatic fever identification with image warning when detecting the feverish people



3

Further measurement (mercurial thermometer)

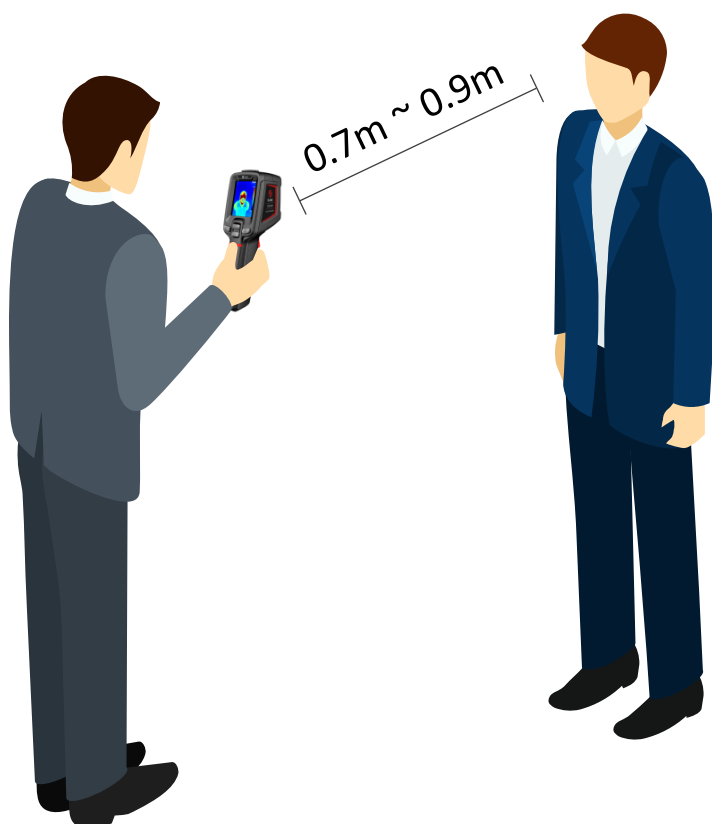


T120H Suggested Scenario

1

Single Mode

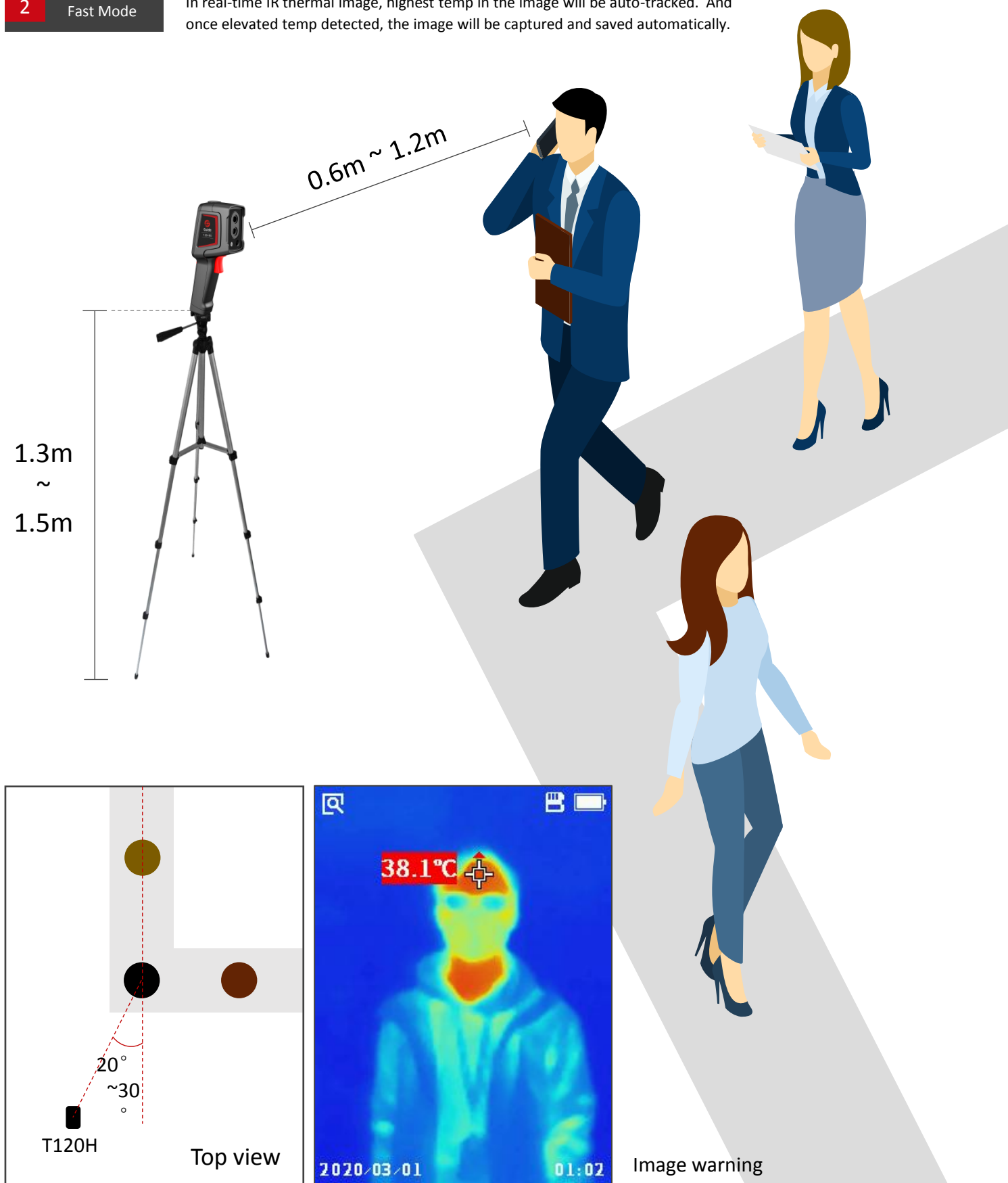
In the real-time IR thermal image, ensure the “detected human face” is in the center of the frame. Press the trigger to freeze the image and display the temperature. Press the trigger again to save the image and return to the real-time IR thermal image.



2

Fast Mode

In real-time IR thermal image, highest temp in the image will be auto-tracked. And once elevated temp detected, the image will be captured and saved automatically.



T120H		
Category	Item	Specification
IR Detector	IR resolution	120*90@17μm
	Detector type	Uncooled Vox/7.5~14μm
	Frame Rate	25HZ
	NETD	60mk
	Focal Length/F#	2.28mm/F1.13
	FOV	50° x38°
	IFOV	7.6mrad
	Focus	Focus-free
Image Display	Display type	2.4inch LCD display
	Display Resolution	240*320
	Image Mode	IR Image
Temperature Measurement	Filter Range	20℃-50℃
	Accuracy	≤±0.5℃ (Ambient temperature 25 ℃, target distance 1m, target temperature 32 ℃ ~ 42 ℃)
	Measurement Point	Central point
	Image warning	Automatic fever identification with image warning (preset value: 37.3℃)
Image Storage	Storage Media	TF card (maximum support: 32G)
	Image Format	Full Radiometric (JPG) (120*90)
Communication Mode	USB	TYPE-C, TF Card slot
	Tripod Interface	YES
Power System	Battery Type	Rechargeable Li-ion battery
	Operating Time	>8H
	Charging Time	DC,≤2.5H
Enviromental Parameter	Operating Temperature	-10℃~50℃
	Storage Temperature	-40℃~70℃
	Encapsulation	IP54, 2-meter Drop Test
Others	Certification	CE/ROHS/FCC
	Weight	350g
	Dimension	194mm *61.5mm *76mm
	Standard Accessories	Wristband, Quick Start Guide, Charging adapter, Plug, USB cable, 16G TF Card

*Note: The temperature measurement accuracy is a typical value under the specified mode and application conditions. The final interpretation right belongs to our company.

ABOUT GUIDE

GUIDE SENSMART is the subsidiary of GUIDE INFRARED, focusing on R&D, manufacturing and marketing for commercial infrared thermal imaging products for masses market since 2016. **GUIDE INFRARED** was founded in 1999, and takes the lead in R&D, production and sales of infrared thermal imaging system and large-scale optoelectronic system. At present, GUIDE Group has a market value of nearly 40 billion RMB, and has more than 3,000 high-tech talents.

In the past 20 years, GUIDE, who has worked hard in the field of thermography human temperature detection, has accumulated a large number of real and reliable samples and numerous application scenarios, forming a large scientific database. Through continuous optimization of algorithms and software and hardware upgrades, especially in the deep learning algorithm based on neural network, which makes temperature detection faster and more accurate.



Guide Sensmart Tech Co., Ltd

Email: enquiry@guide-infrared.com

Tel: +86 27 81298784

Website: www.guideir.com

*Technical parameters are subject to change without notice. For the latest information, please visit our website.

