

D Series

Intelligent Thermal Camera

Intelligent Operation Affordable Price

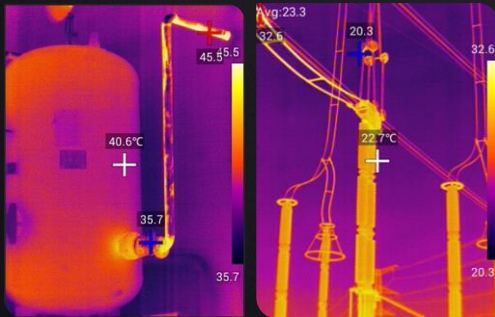


Introduction

D Series intelligent thermal camera is simple, compact and ergonomic. It equipped with 4-inch high-brightness touchscreen, Android operating system, user-friendly UI for easy operation. And every step has professional tips, so that the first user can become an expert quickly. With high IR resolution and various powerful functions, D series is the ideal thermal inspection tool for power inspection, equipment maintenance and building diagnostic applications.

Features and Benefits

- 4" high light touch screen, all operation can be completed on the touch screen
- You can choose the proper lens for different occasions
- Built-in illuminator, take visible photos in the low lighting environment
- Removable SD card, Up to 32G storage capacity
- Wi-Fi communication, share IR images and findings immediately
- Connected with mobile terminal to take IR photo, to achieve multi screen control



Application

- Mechanical maintenance
- Building diagnostic
- Telecom equipment inspection
- Electrical equipment inspection

Specifications

Model	D192F	D192M	D384F	D384M	D384A
Imaging and optics					
Detector type	VOx				
Infrared resolution	192 × 144@25μm		384 × 288@25μm		
Super resolution technology	/		Yes, Upgrade to 768 × 576		
Wavelength range	7.5 to 14μm				
Focal length	7 mm		19 mm		15 mm
Field of view	38° × 29°		28° × 22°		35° × 27°
Minimum object distance	1 m	0.5 m	1 m	0.5 m	0.4 m
D:S	289:1		775:1		625:1
NETD	≤50 mK		≤45 mK		≤40 mK
Infrared frame rate	25 Hz / 9 Hz				
Focusing mode	Focus-free	Manual	Focus-free	Manual	Electric / Automatic
Digital zoom	1.1x to 4x				
Shot recognition	/	Manual	/	Manual	/
Measurement and analysis					
Measurement range	-20°C to 350°C	-20°C to 150°C, 100°C to 650°C, Optional 650°C to 1500°C (High temperature lens is required)	-20°C to 350°C	-20°C to 150°C, 100°C to 650°C, Optional 650°C to 1500°C (High temperature lens is required)	-20°C to 150°C, 100°C to 650°C
Measurement accuracy	±2°C or ±2%, whichever is greater				
Analyzed target	Spot × 5, Line × 2, Area × 5				
Tracking / Alarm	Full screen maximum, minimum and average temperature tracking; The maximum, minimum and average temperature tracking of analyzed target; full screen temperature threshold alarm (image)				
Isothermals	Available				
Temperature measuring parameters	Emissivity, reflected temperature, dew point, target distance, humidity				
Image display					
Display screen	4" LCD				
Digital camera	5 MP				
Image mode	IR, VIS, MIF and PIP				
Image adjustment	Automatic, semi-automatic, manual				
Color palettes	White Hot, Fulgurite, Iron Red, Hot Iron, Medical, Arctic, Rainbow 1, Rainbow 2				
Storage and transmission					
Storage media	Local storage (16 GB) and TF card (16 GB and up to 128 GB)				
Image storage format	JPG with temp info				
Video storage without temperature information	Mp4 format can be used to record audio synchronously				
Video storage with temperature information	Irgd for temperature analysis				
External interface	Micro USB, Micro HDMI, DC (12V) , TF card slot				
Laser	645~655nm, Class 2 laser, < 1mW, only indicating the measured target				
Audio	Recording and playback through microphones and speakers respectively				
WIFI	Yes, it can be connected to the mobile terminal for image and real-time video transmission				
Bluetooth	/				Available
Power system					
Battery type	Lithium-ion rechargeable battery				
Battery working time	≥4 hours				
Power management	Timed shutdown and sleep mode				
Charging mode	The device can be charged through desktop charger after shutdown.				
Charging time	5 hours				
Environmental parameters					
Working temperature	-10°C to 50°C				
Storage temperature	-40°C to 70°C				
IP rating	IP54				
Certification	CE, FCC, ROHS, KCC, Anatel, UN38.3, MSDS				
Physical parameters					
Weight	≤735 g (with battery)	≤840 g (with battery)	≤735 g (with battery)	≤840 g (with battery)	≤735 g (with battery)
Size (L × W × H)	274 × 97 × 78 mm			274 × 110 × 78 mm	274 × 91 × 78 mm
Software kit	ThermoTools				
Standard	A device, Wrist strap, Lithium-ion battery, Power adapter, Adapter plug, Micro USB cable, Micro HDMI cable, Quick Start Guide, Instructions, Data download card, Capacitive screen gloves, TF card (16 GB) , EPP case		A device, Wrist strap, Lithium-ion battery, Power adapter, Adapter plug, Micro USB cable, Micro HDMI cable, Quick Start Guide, Instructions, Data download card, Capacitive screen gloves, TF card (16 GB) , A carrying case		
Options	Lithium-ion battery, Carrying bag, Desktop charger, Tripod interface, Tripod, Sunshade	Lithium-ion battery, Carrying bag, Desktop charger, Tripod interface, Tripod, Sunshade, Expanded lens	Lithium-ion battery, Carrying bag, Desktop charger, Tripod interface, Tripod, Sunshade	Lithium-ion battery, Carrying bag, Desktop charger, Tripod interface, Tripod, Sunshade, Expanded lens	Lithium-ion battery, Carrying bag, Desktop charger, Tripod interface, Tripod, Sunshade, Bluetooth headset