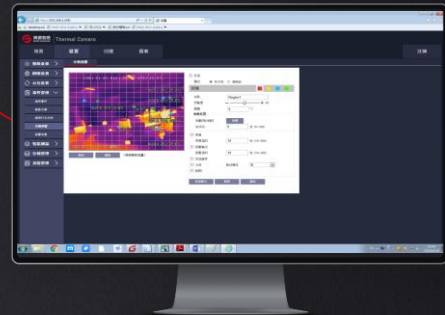


# DS60xxFT-P

Thermographic Thermal & Optical Bi-spectrum Network Speed Dome



## Introduction

DS60xxFT-P series is mainly used in medium-range indoor and outdoor monitoring and temperature measurement application scenarios. The product uses vanadium oxide uncooled infrared detectors, which are not affected by the light environment, and can achieve 24-hour remote monitoring and high-precision temperature measurement. Built-in deep learning pyrotechnic recognition algorithm, with fire detection and alarm functions.



## Features and Benefits

- Web-side control, no other client software is required for parameter configuration
- With high-precision temperature measurement and early warning functions, fire detection and alarm functions
- Up to 300 temperature measurement preset points can be set
- Each preset point can set 12 temperature measurement objects at the same time
- Support real-time temperature analysis, historical temperature information query function
- Various behavior analysis functions such as tripwire intrusion, region intrusion etc.

## Application

Suitable for medium-range indoor and outdoor scenes, such as temperature measurement in transformer substations, short-distance straw burning ban, fire prevention in scenic cultural museums, etc.

# Specifications

| Model   | DS6013FT-P  | DS6025FT-P    | DS6050FT-P       |
|---|---|---------------|------------------|
| <b>Thermographic parameters</b>                     |   |               |                  |
| Detector type                                       | VOx   |               |                  |
| Detector resolution                                 | 640×512   |               |                  |
| Pixel size  | 17μm  |               |                  |
| Wavelength range                                    | 8μm~14μm  |               |                  |
| NETD  | ≤40mK@30°C  |               |                  |
| Thermographic camera lenses                         | 13mm, 45.4° × 37°   | 25mm, 25°×20° | 50mm, 12.4°×9.9° |
| Detail enhancement                                  | Available   |               |                  |
| Noise reduction                                     | 2D/3D noise reduction   |               |                  |
| Image flip  | Available   |               |                  |
| Pseudo color  | 9 pseudo colors: White Hot, Black Hot, Fulgurite, Rainbow and so on   |               |                  |
| <b>Temperature measurement parameters</b>           |   |               |                  |
| Measurement range                                   | Low temperature mode: -20 °C to 150 °C, high temperature mode: -20°C to 550°C   |               |                  |
| Measurement accuracy                                | ±2°C or ±2% (whichever is greater)  |               |                  |
| Target setting                                      | Multi-preset-point temperature measuring, up to 300 temperature measuring preset points; For each preset point: spot temperature measuring: 12 spots, area temperature measuring: 12 areas, linear temperature measuring: 12 lines; Up to 12 simultaneous objects |               |                  |
| Cold/hot spot tracking                              | Available   |               |                  |
| Full-screen point temperature measuring             | Available   |               |                  |
| Query and export of temperature measuring informati | Available   |               |                  |
| <b>Visible light parameters</b>                     |   |               |                  |
| Sensor type   | 1/1.9" CMOS   |               |                  |
| Maximum resolution                                  | 1920x1080   |               |                  |
| Minimum illuminance                                 | Color: 0.001lux @ (F1.5, AGC ON) black and white: 0.0001Lux @ (F1.5, AGC ON)  |               |                  |
| Visible light gain control                          | Auto/manual   |               |                  |
| Visible light noise reduction                       | 2D/3D noise reduction   |               |                  |
| Backlight compensation                              | Available   |               |                  |
| Wide dynamic  | Available   |               |                  |
| Strong-light photoinhibition                        | Available   |               |                  |
| Image flip1   | Available   |               |                  |
| Exposure compensation                               | Available   |               |                  |
| Visible light lens                                  | 6mm-210mm, horizontal: 61° (near focus) - 2.0° (far focus), 1m-1.5m (near focus to far focus)   |               |                  |
| Fill light  | Infrared fill light   |               |                  |
| <b>Image parameter</b>                              |   |               |                  |
| Video compression standard                          | Switch between three standards H.265, H.264 and MJPEG   |               |                  |
| Image coding formats                                | JPEG  |               |                  |
| Code stream   | Visible light Mainstream(1,920×1,080, 1,280×720) ; Visible light Substream(1280×720, D1) ; Thermal image stream 1,280 × 1,024@25Hz, 640 × 512@25Hz  |               |                  |
| <b>Protocol and storage</b>                         |   |               |                  |
| Network protocol                                    | IPv4,HTTP ,FTP,SMTP ,RTSP,RTP,TCP,UDP,DHCP ,ONVIF,GB/T28181 IPv4, HTTP, FTP, SMTP, RTSP, RTP, TCP, UDP, DHCP, ONVIF, GB/T28181  |               |                  |
| Sdk/api   | Open API/SDK for software integration   |               |                  |
| Local storage                                       | 32G TF card   |               |                  |
| <b>System function</b>                              |   |               |                  |
| Language version                                    | Chinese/English   |               |                  |
| Browser   | Available   |               |                  |
| User management                                     | It supports up to 20 users and multi-level user permission management; which is divided into three levels: root user, management group and user group   |               |                  |
| Fault detecti                                       | Network disconnection detection, IP conflict detection, encoder status detection, memory card status detection, storage space detection   |               |                  |
| <b>Hardware interface</b>                           |   |               |                  |
| Power interface                                     | AC 24V/3A±15%   |               |                  |
| Network interface                                   | One 100M/1,000M Ethernet port   |               |                  |
| Alarm interface                                     | 1 input and 1 output  |               |                  |
| Other interface                                     | 1-channel RS485, audio 1 in 1 out   |               |                  |
| <b>Environmental parameters</b>                     |   |               |                  |
| Working temperature                                 | -40°C to +60°C  |               |                  |
| Working humidity                                    | ≤ 95%, non-condensing   |               |                  |
| Encapsulation                                       | IP66  |               |                  |
| <b>Physical parameters</b>                          |   |               |                  |
| Product size  | ≤ Φ237mm*355mm  |               |                  |
| Net weight  | ≤5kg  |               |                  |
| Power consumption                                   | <20W  |               |                  |
| Installation mode                                   | Wall mounting/ceiling mounting  |               |                  |

# Dimensions

