

# PC Series

Tool-like  
Thermal camera

Clearer And Longer Operating



## Introduction

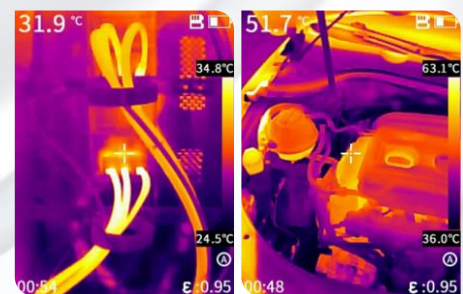
PC Series, Tool-like Handheld Thermal Camera, With excellent performance in image quality and charging battery life , This Thermal Camera adopts 256x192 IR Detector and 200W pixel visible light . Adopts the New SharpIR composite image enhancement technology, it can provide you with detailed infrared thermal imaging and dual-light fusion images to help you find potential faults more quickly.

## Application

- Building Diagnostics
- HVAC Inspection
- Facilities maintenance
- Electrical Application

## Features and Benefits

- Adopts 256x192 infrared module with Excellent imaging quality
- 16H Operating time, 2.5H fast charge, easy to cope with two days of work
- Turn on in 1 second And Use, full-frame temperature measurement
- Rugged and Durable, Resistant to 2 meters drop, IP54 Protection Rating
- 4 image modes, And all palettes can display the temperature
- Wide temperature measurement range, -20°C~550°C, Automatic Switch
- Type C interface, Easy to transfer data And support PC screen projection



## Specifications

Product model	PC210	PC230
<b>Imaging and optics</b>		
Detector type	VOx	
Infrared resolution	256 × 192@12µm	
Wavelength range	7.5 to 14µm	
Focal length	3.2 mm	7 mm
Field of view	56° × 48°	25° × 19°
IFOV	3.75mrad	1.71mrad
Minimum object distance	0.3 m	0.5 m
D:S	266:1	585:1
NETD	≤45 mK	
Infrared frame rate	25 Hz / 9 Hz	
Focusing mode	Focus-free	Automatic
<b>Measurement and analysis</b>		
Measurement range	Support auto-switching: -20°C to 150°C, 100°C to 550°C	
Measurement accuracy	±2°C or ±2%, whichever is greater	
Analyzed target	Center spot and 3 areas	
Tracking / Alarm	Full screen maximum/minimum temperature tracking; The maximum or minimum temperature tracking of analyzed target; full screen temperature threshold alarm (image and flash)	
Temperature measuring parameters	Emissivity, reflected temperature, target distance	
<b>Image display</b>		
Display screen	2.4" LCD	
Digital camera	2 MP	
Image mode	IR, VIS, MIF and PIP	
Image adjustment	Automatic, semi-automatic, manual	
Color palettes	Iron Red, White Hot, Arctic, Rainbow 2, Hot Iron, Rainbow 1	
<b>Functions</b>		
Shooting	Photo	
<b>Storage and transmission</b>		
Storage media	TF card (32 GB)	
Image storage	JPG with temp info	
External interface	TYPE-C, TF card slot, UNC ¼"-20 (tripod mounting)	
Laser	645~655nm, Class 2 laser, <1mW, only indicating the measured target	
<b>Power system</b>		
Battery type	Rechargeable lithium-ion battery, non-removable	
Battery working time	≥16 hours	
Power management	Timed shutdown and sleep mode	
Charging mode	TYPE-C charging; PC/portable charger; Capable of charging while using	
Charging time	90% of full charge in 2.5 hours	
<b>Environmental parameters</b>		
Working temperature	-15°C to 50°C	
Storage temperature	-40°C to 70°C	
IP rating	IP54	
Drop	2m drop test	
Certification	CE, FCC, ROHS, KCC, IP54, 2m drop test, Damp heat test, Vibration test, Shock test, Impact test, UN38.3, MSDS	
<b>Physical parameters</b>		
Weight	≤375 g	
Size (L × W × H)	194 × 61.5 × 76 mm	
Software kit	ThermoTools	
Standard	A device, Wrist strap, Quick Start Guide, Power adapter, Adapter plug, Type-C USB cable, Data download card, TF card (32 GB) , Certificate of approval	
Options	Tripod	