

T Series

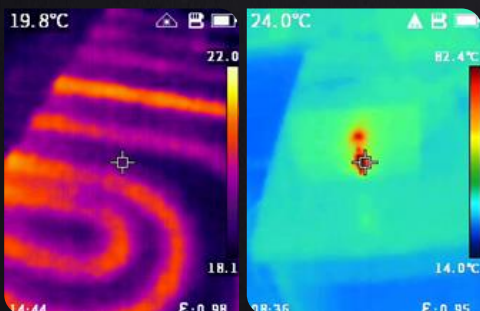
Entry-level Portable Thermal Camera

See the heat of 10,800 pixels in 1 second



Introduction

T Series Entry-level Thermal Image Camera is an affordable temperature measuring tool widely used for building diagnostics, HVAC inspections, electrical system inspections and more. It perfectly overcomes the shortcomings of the single spot infrared thermometers and helps work smarter, safer and faster. Equipped with Guide's self-developed 120x90 WLP IR modules, T120 series thermal cameras can display radiometric data of 10,800 pixels instantly which helps quickly detect large areas and pinpoint fault spots accurately.



Features and Benefits

- Boot-up in 1 second
Boot up and display fully radiometric image instantly
Full screen max & min temperature alarm
- 2.4 inch Large Display
240x320 pixel Color LCD
- Good-handle Buttons
Ergonomic design
Easy to operate even wear the gloves
- 8-hour Battery Life
Low power consumption
Large capacity battery
- 2-hour Quick Charge
USB Type-C Interface
High power quick charge
- IR/Visible/Laser Indicator
Pinpoint targets precisely
- Trigger Button
Trigger button for photo taking
- Rugged Design
2-meter Drop Test, IP54
Encapsulation

Application

- Building Diagnostics
- HVAC Inspection
- Facilities maintenance
- Electrical Application

Specifications

Model	T120	T120V
IR image & Optical		
Detector type	120×90@17μm, VOx	
Spectral	7.5~14μm	
Frame Rate	25Hz/9Hz	
Thermal Sensitivity / NETD	60 mk	
Focal Length	2.28mm/F1.13	
Field of view(FOV)	50°×38°	
Spatial Resolution(IFOV)	7.6 mrad	
D:S	130:1	
Focus	Focus-free	
Visible Camera		
Visible Camera Resolution	N/A	240×320, Focus-free
Flashlight	N/A	Yes
Image Display		
Display	2.4 inch IPS technology TFT display	
Display Resolution	240×320	
Image Model	IR image	IR/Visible/Picture-in-picture
Color Palettes	6:White Hot, Iron Red, Hot Iron, Arctic, Rainbow 1, Rainbow 2	
Temperature Measurement		
Temperature Range	-20°C-150°C, 100°C-400°C (Auto switching)	
Accuracy	±2°C or ±2%, whichever is greater (target temp ≥0°C, ambient temp is 15°C ~ 30°C)	
Measurement Spot	Center spot	
Measurement Area	3(incl. max & min temp)	
Auto Hot & Cold Spot Tracking	Yes	
Alarm	Full Screen Max & Min Spot Alarm	
Image Storage		
Storage Media	TF card (Standard 16G, up to 32G)	
IR Image Format	Full Radiometric (JPG) (120 x 90)	
Visible Image	N/A	Yes, 320 x 240
Connections & Communications		
USB	TYPE-C、TF Card slot	
Laser	Yes	
Tripod interface	Yes	
Mobile APP	N/A	Yes
PC IR Analysis Software	Yes	
Power System		
Battery Tpye	Rechargeable Li ion battery	
Battery Operating Time	> 8 hours	> 5 hours
Charging Time	Internal charge, ≤2.5 hours	
Environmental Parameters		
Operating Temperature	-10°C~50°C	
Storage Temperature	-40°C~70°C	
Encapsulation	IP54, 2-meter drop test	
Certification	CE/ROHS/FCC	
Weight	about 350g	
Size	194mm×61.5mm×76mm	
Standard Accessories	Charger + Adapter, TYPE-C USB cable, Wrist Strap, Quick start Guide, Data Download Card, 16G TF Card	