

# IPT384

Electric-focus Network Online Thermal Camera

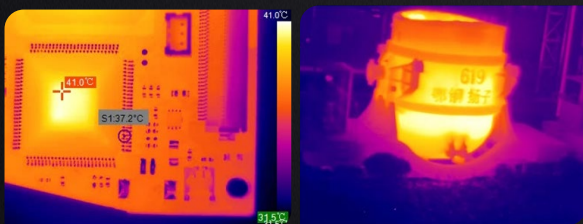


## Introduce

IPT series is a IP thermal camera with outstanding performance and high sensitivity. Utilizing uncooled infrared detector, it is compact, lightweight and reliable. IPT series is developed based on a common interface protocol, the powerful software and easy-to-use SDK make it easy to integrate.

## Features and Benefits

- Easy communication via Gigabit Ethernet
- Free professional control software and SDK
- Provide SDK for LINUX and WINDOWS system, including rich interface function for integration
- Simple for on-site use, supporting auto focus and motor locating



## Application

- Industrial measuring of temperature
- Industrial automation
- Scientific research
- Integration of UAV, robot or optoelectronic system

## Specifications

IPT384	
<b>Imaging Performance</b>	
IR resolution	384×288
Spectral Range	8~14μm
Pixel size	17μm
NETD	≤60mk
<b>Lens</b>	
FOV/Focal length	25°×19°/15mm
Focus	Electric/Automatic
<b>Measurement Features</b>	
Temperature range	-20°C-150°C, -20°C-350°C or -20°C-150°C, 100°C-650°C
Accuracy	±2°C or ±2% of reading for ambient temperature 15°C to 35°C
measuring distance	0.5m-5m; 0.5m-10m; 5m-25m (three choose one or three choose two)
<b>Ethernet</b>	
Function	Wireless Communication and control
Ethernet Type	1000Mbps
Video Streaming	25Hz Y8+ (0Hz~25Hz) Raw data Y16
Protocol	RTSP, UDP, HTTP, TCP/IP, Onvif
IP distribution	Static IP, Dynamic IP
Networking mode	Directly connect to the computer for Y16 of no lower than 16Hz; connect via LAN (up to 32 sets )for Y16 of no lower than 16Hz.observe 9 sets synchronously .
<b>SDK</b>	
Systems	WINDOWS(32-bit&64-bit)/ LINUX(32-bit&64-bit)
Palette	8
Bit transmission	Support compressed video
Video presentation	Support decoded video
IP setting	IP address query, modify and store
Video Recording	IR video (compressed video) without temp. info
Photo shooting	IR image of JPG with temp. info
Motorized focus control	Near focus, far focus, auto focus
Focus motor locating	Setting and locating the focus motor
Auto-reconnect	Yes
Shutter	Shutter control interface
Frame rate setting	Frame rate setting of Y16 (0Hz~25Hz)
<b>PC software</b>	
Function	Control/ storage/ settings/ analysis/ playback
<b>Power system</b>	
Typical voltage	12V
<b>Environmental Parameters</b>	
Operating temp range	-10°C~50°C; -20°C~60°C
Storage temp range	-40°C~70°C
Humidity	5%~95%. non-condensing
Shock	10Hz~150Hz~10Hz 0.15mm ( IEC 60068-2-6 )
Vibration	30g 11ms ( IEC 60068-2-27 )
<b>Physical Characteristics</b>	
Dimensions	88mm×60mm×60mm (lens included. interface excluded)
Weight	410g
Mounting interface	M3 thread (for 4 sides)
<b>Others</b>	
External interfaces	Power, power indicator, Ethernet port, network reset port, alarm output IO, RS485
<b>Pack</b>	
Standard accessories	Thermal module with a standard lens ×1. Power adapter ×1. CCC plug ×1. CE plug ×1. CD ×1. Network cable ×1